



jordan fishwick

10 Queensbury Close, Regents Park, SK9
Guide Price £759,000

Queensbury Close Wilmslow SK9 2GW

Guide Price £759,000




An attractive detached family residence set in a pleasant cul-de-sac on the ever sought after Regents Park development with local shops and within easy reach of the A34 bypass providing access to Handforth Dean, Cheadle Royal, Wilmslow town centre and surrounding areas. There is also discreet pedestrian access to Wilmslow town centre and train station. Originally a four bedroom property, the present owners have opened the third bedroom to the fourth bedrooms to create a larger bedroom with dressing room. (This could easily be reverted back to its original form should the new buyer wish to do so). This spacious and well designed property comprises in brief: Reception Hallway, elegant living room with feature fireplace leading through to a dining area. There is a family area open to the stylish kitchen and also providing access to the conservatory overlooking the rear garden. Off the Kitchen is a useful utility room and downstairs W.C with further access to the converted part of the garage. The front part of the garage is still accessed from the its front door. The lawned gardens sweep around from the side aspect to the rear with mature conifer hedging providing a high degree of privacy.

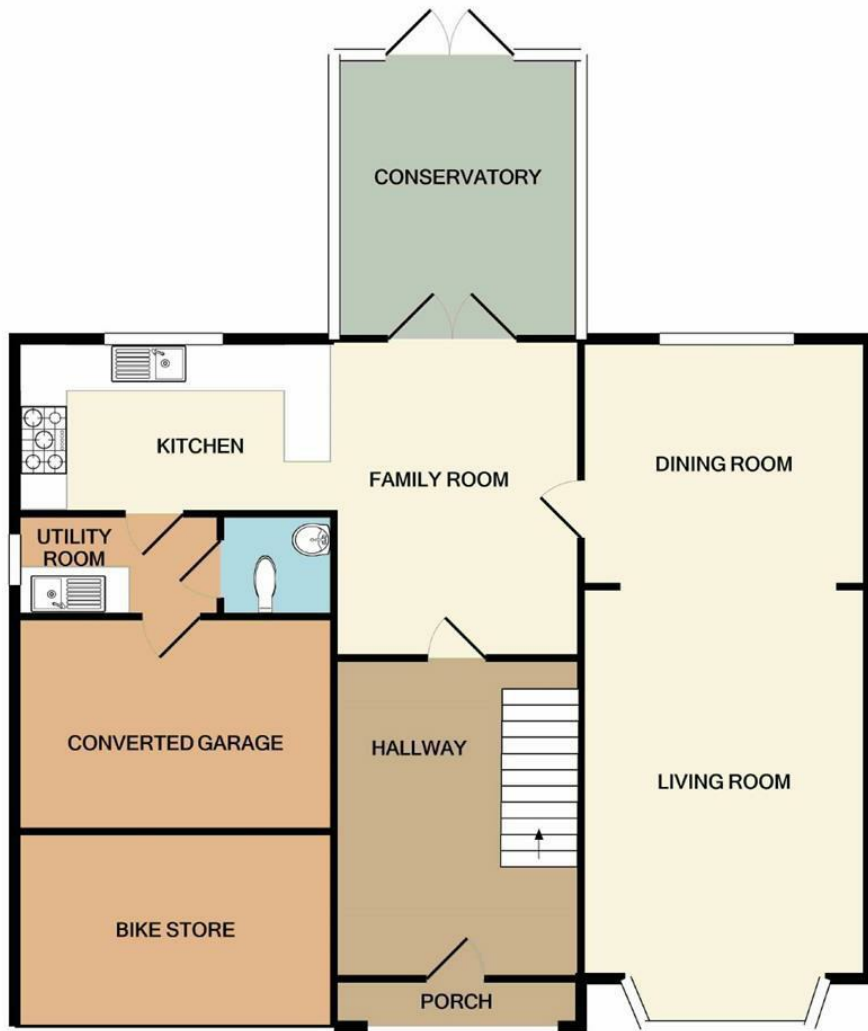


- Detached Property
- Large living room
- Kitchen diner
- Ensuite
- Popular location
- Off road parking
- Integral garage

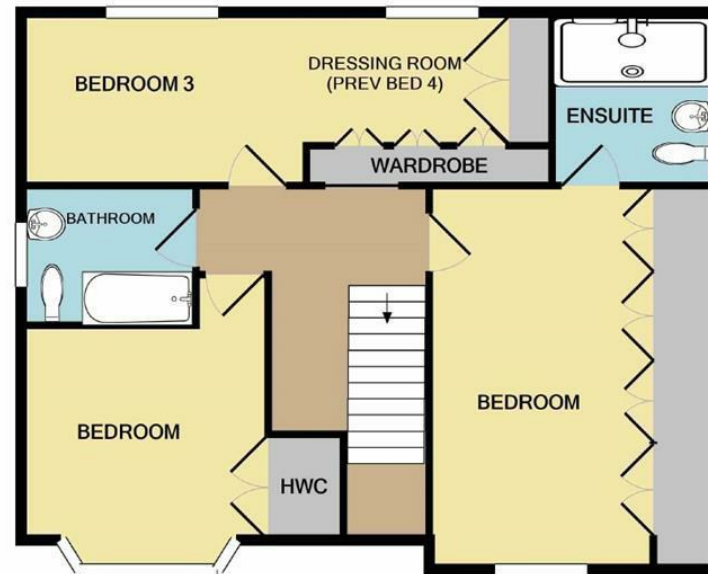


Energy Efficiency Rating		
	Current	Potential
Very energy efficient - lower running costs		
(92 plus) A		
(81-91) B		
(69-80) C		
(55-68) D		
(39-54) E		
(21-38) F		
(1-20) G		
Not energy efficient - higher running costs		
England & Wales	EU Directive 2002/91/EC 	





GROUND FLOOR



1ST FLOOR

Measurements are approximate. Not to scale. Illustrative purposes only
Made with Metropix ©2021



These particulars are believed to be accurate but they are not guaranteed and do not form a contract. Neither Jordan Fishwick nor the vendor or lessor accept any responsibility in respect of these particulars, which are not intended to be statements or representations of fact and any intending purchaser or lessee must satisfy himself by inspection or otherwise as to the correctness of each of the statements contained in these particulars. Any floorplans on this brochure are for illustrative purposes only and are not necessarily to scale.

Offices at: Chorlton, Didsbury, Disley, Hale, Glossop, Macclesfield, Manchester Deansgate, Manchester Whitworth Street, New Mills, Sale, Wilmslow and Withington

36-38 Alderley Road, Wilmslow SK91JX
01625 532000

wilmslow@jordanfishwick.co.uk
www.jordanfishwick.co.uk